

Крокусы в Карпатах

Схема вышивки крестиком

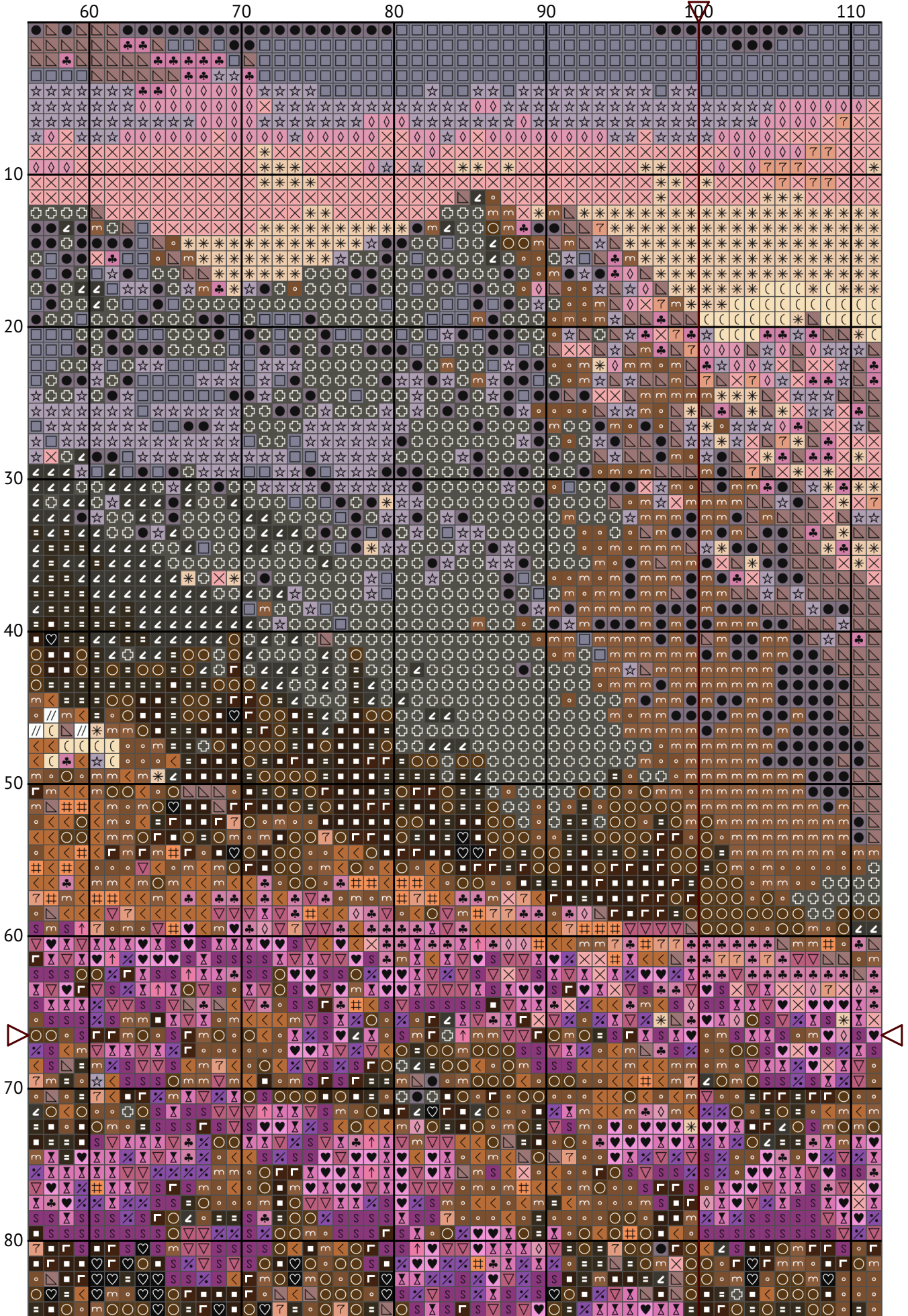


Размер: 200 x 133 крестиков

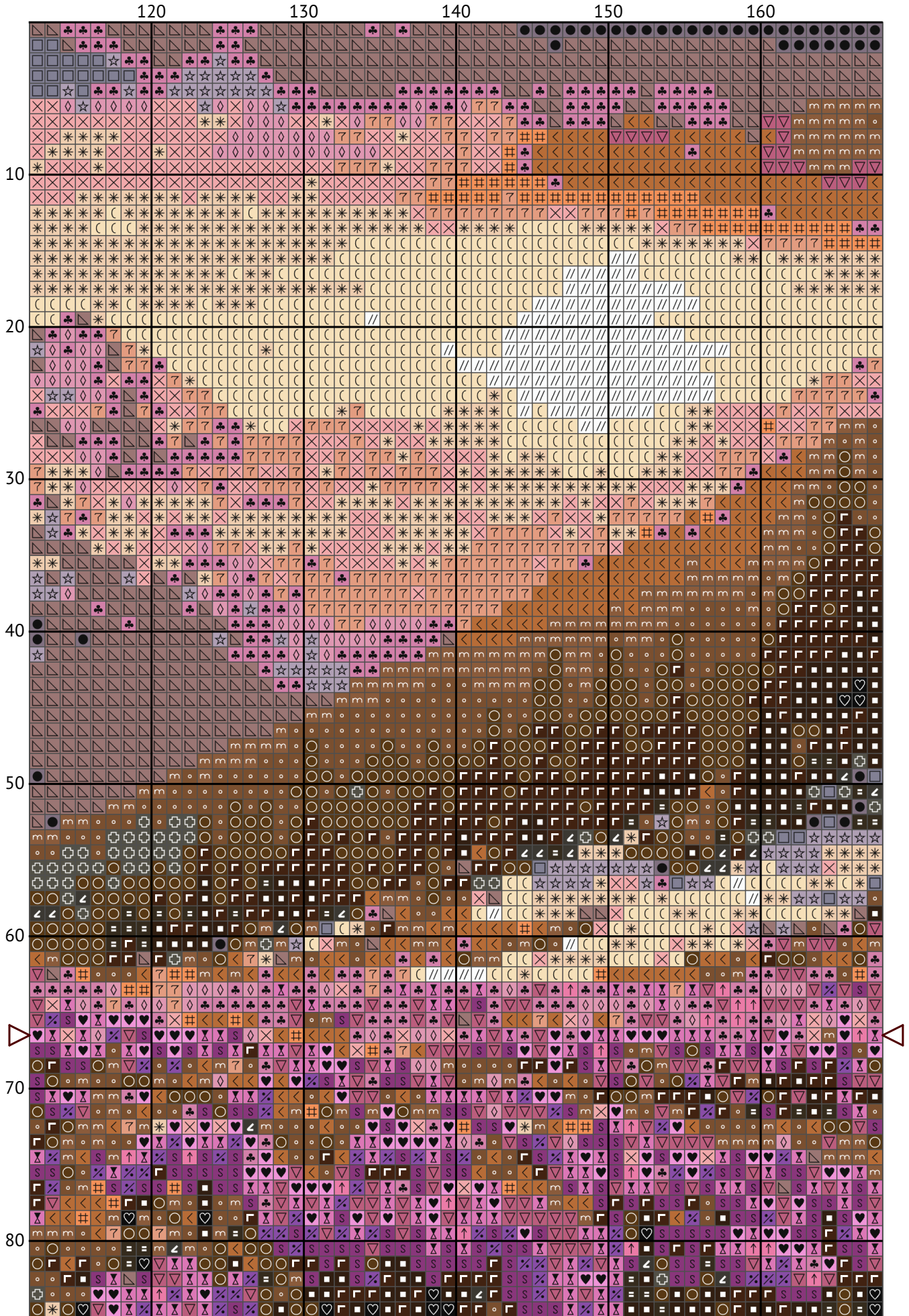
Крокусы в Карпатах



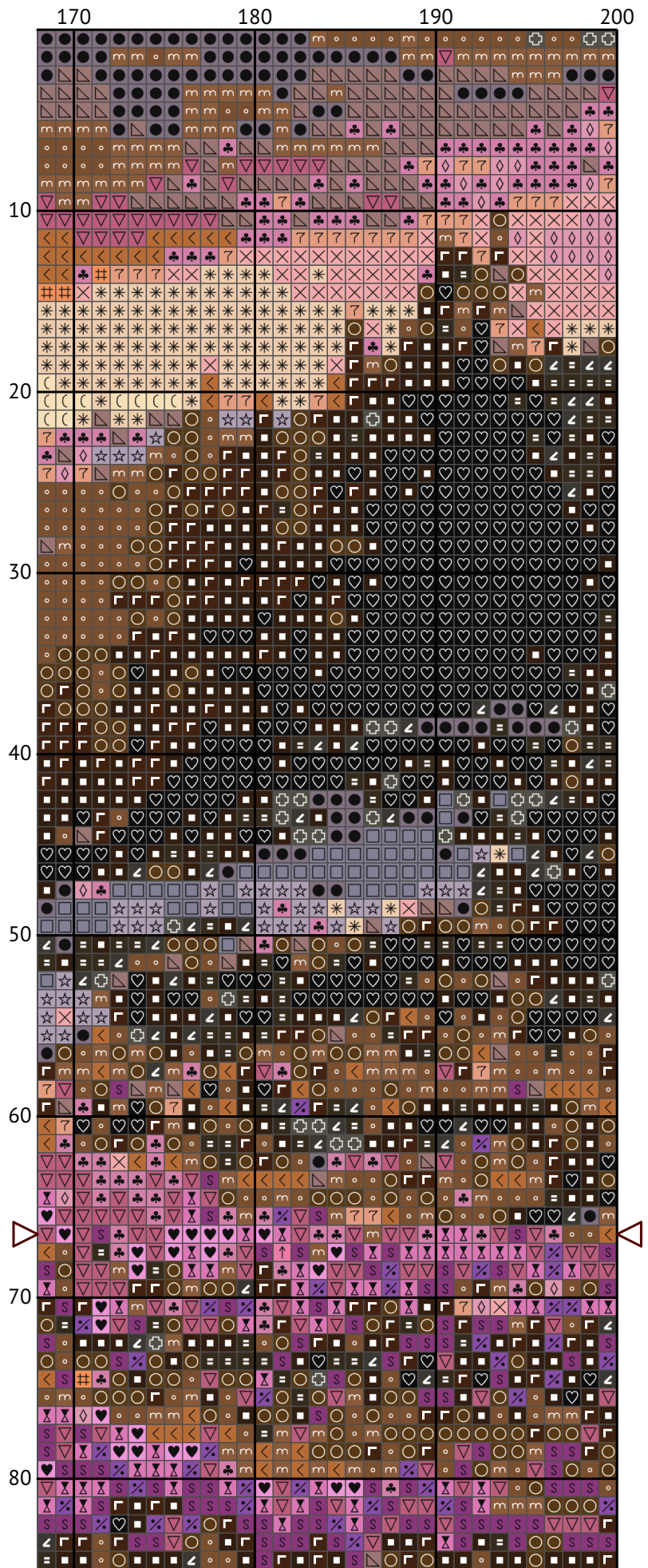
Крокусы в Карпатах



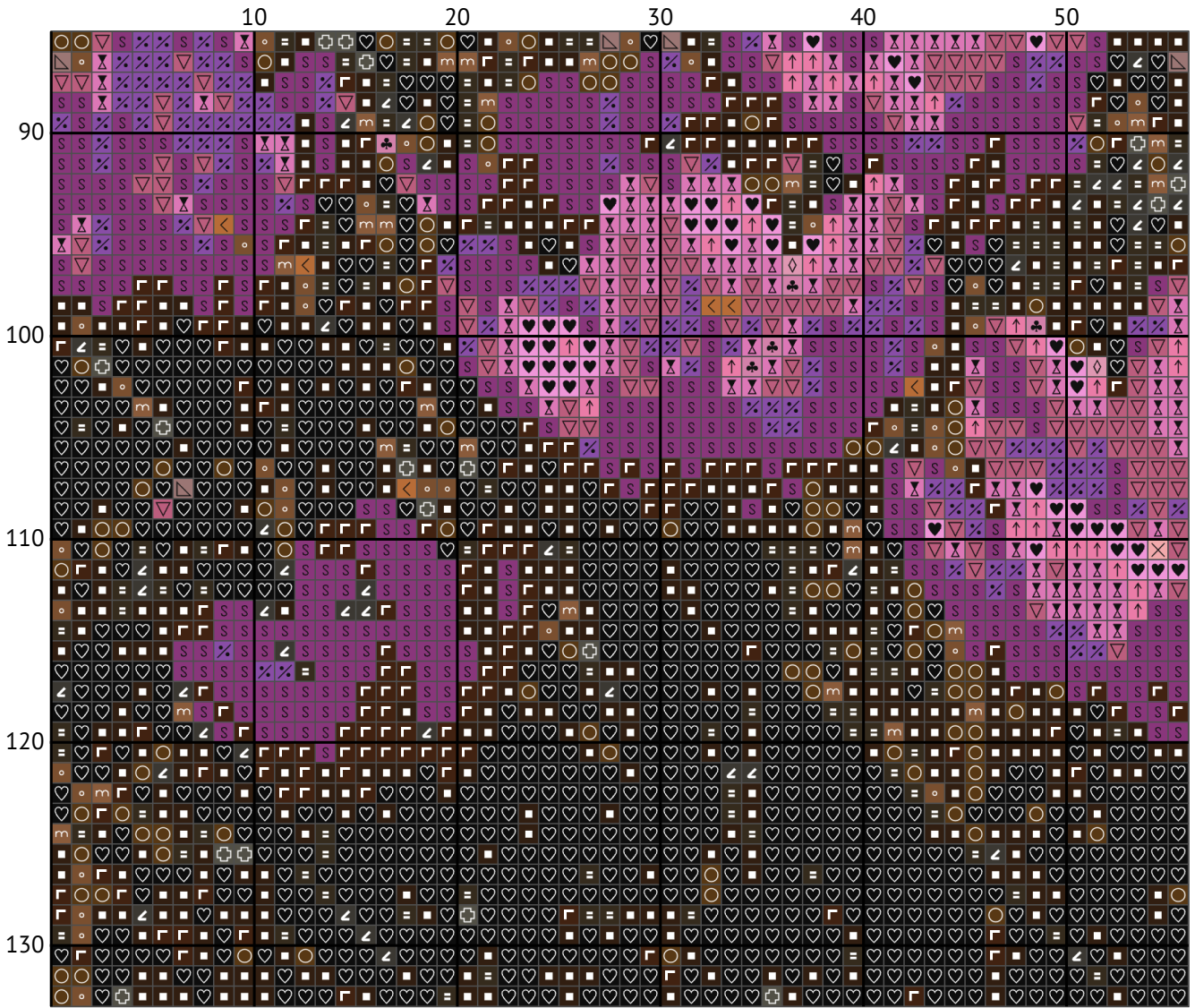
Крокусы в Карпатах



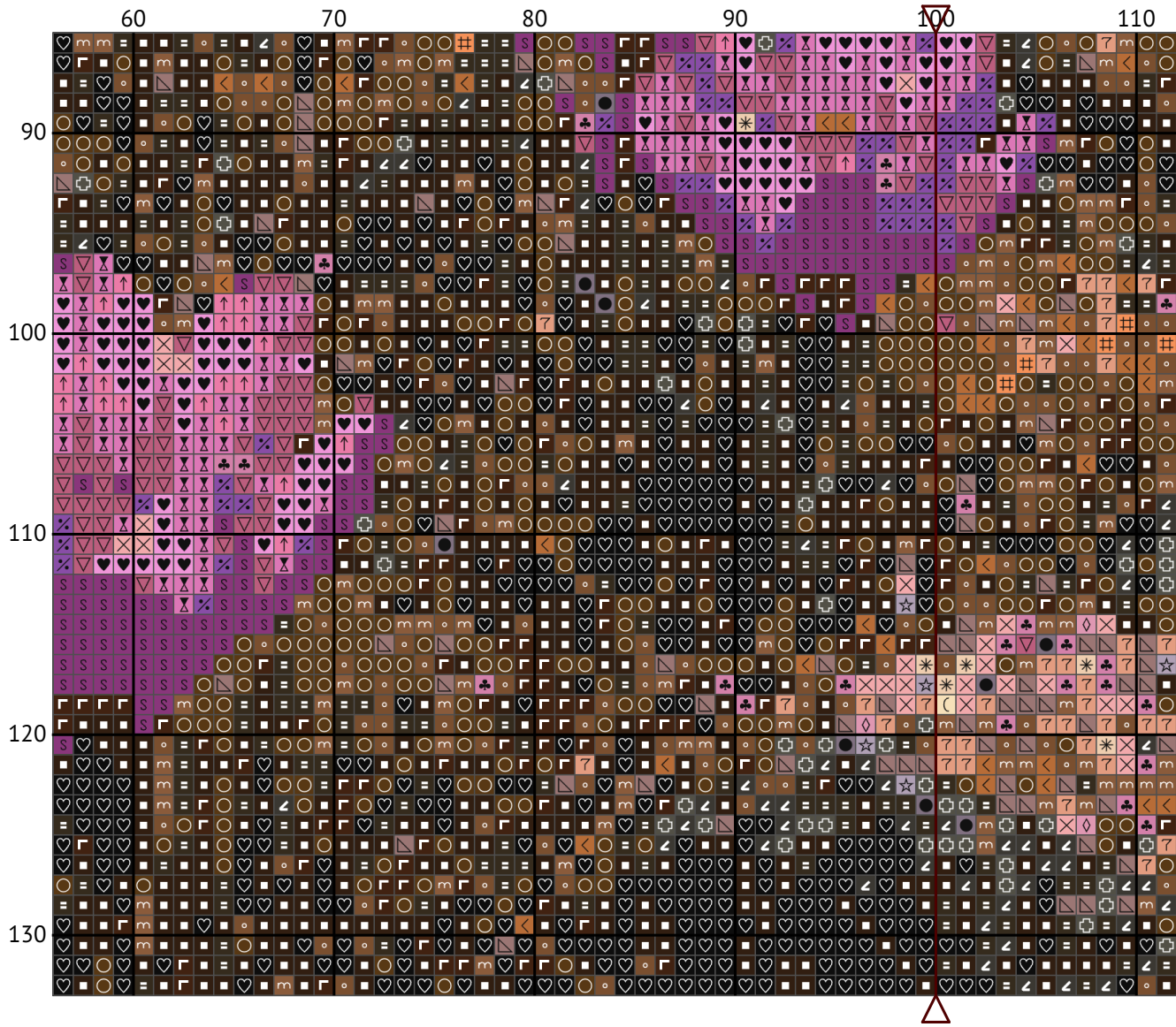
Крокусы в Карпатах



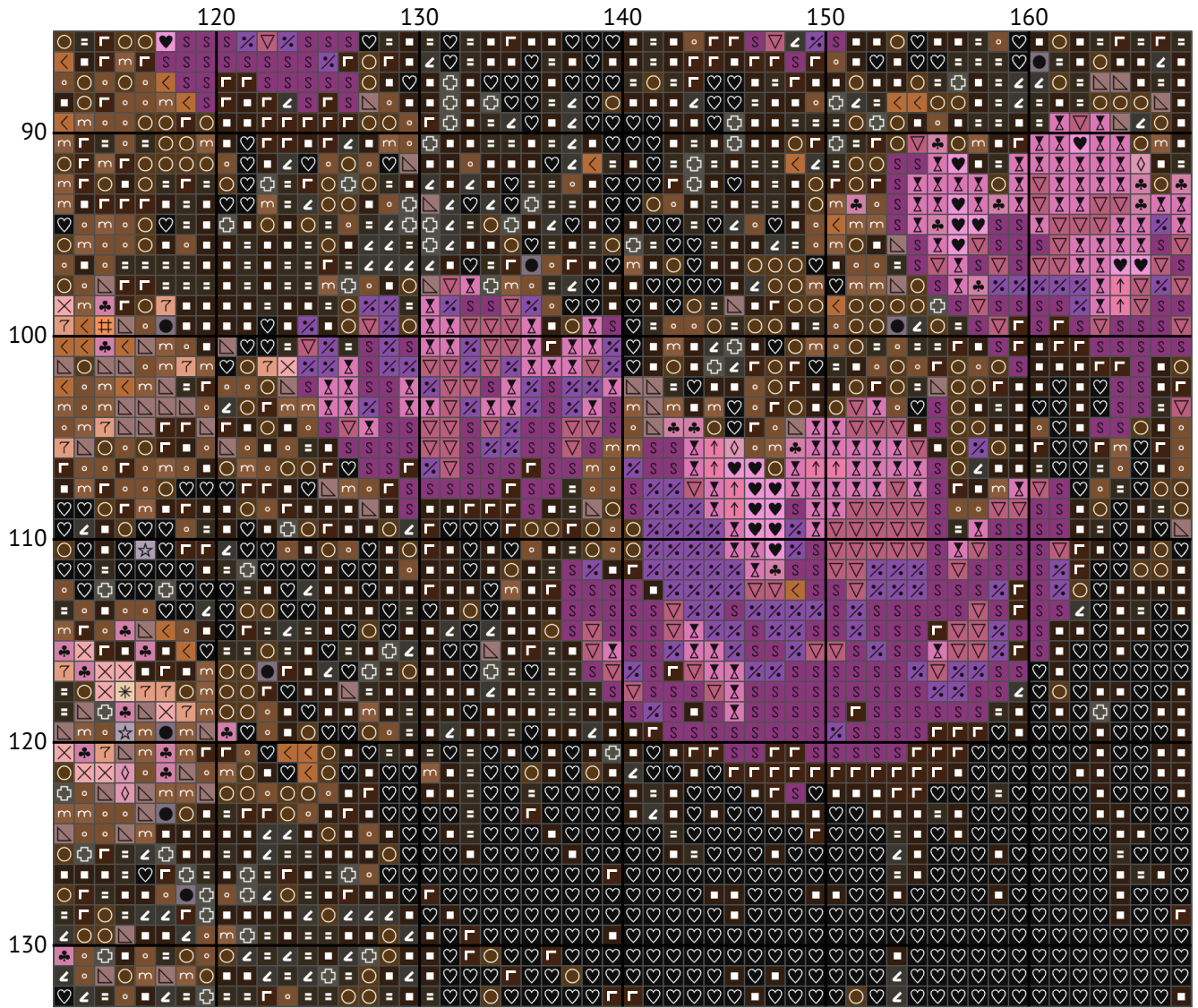
Крокусы в Карпатах



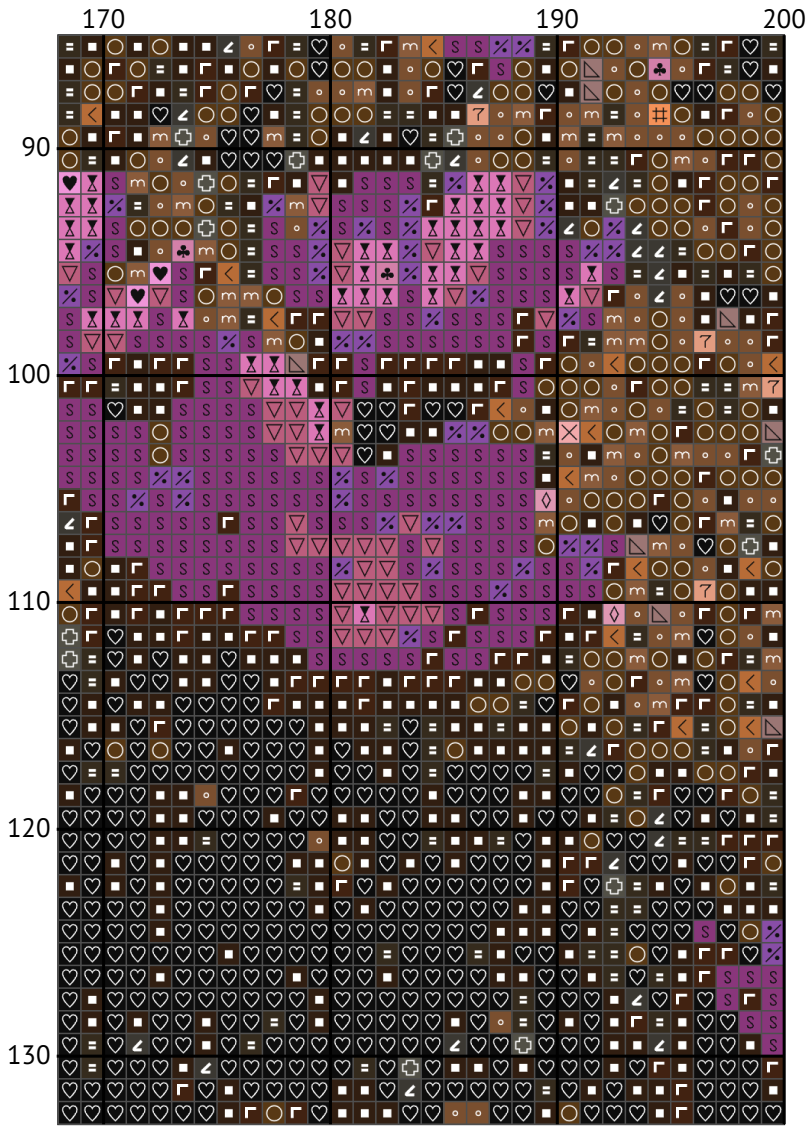
Крокусы в Карпатах



Крокусы в Карпатах



Крокусы в Карпатах



Крокусы в Карпатах
Список нитей мулине DMC

N	Symbol	Number	Name	Stitches
1		 DMC 33	Fuchsia	1754
2		 DMC 310	Black	3115
3		 DMC 316	Antique Mauve - Medium	583
4		 DMC 318	Steel Gray - Light	603
5		 DMC 436	Tan	736
6		 DMC 553	Violet	642
7		 DMC 604	Cranberry - Light	101
8		 DMC 645	Beaver Gray - Very Dark	919
9		 DMC 754	Peach - Light	396
10		 DMC 844	Beaver Gray - Ultra Dark	596
11		 DMC 869	Hazelnut Brown - Very Dark	1952
12		 DMC 898	Coffee Brown - Very Dark	1377
13		 DMC 948	Peach - Very Light	858
14		 DMC 951	Tawny - Light	573
15		 DMC 3021	Brown Gray - Very Dark	1174
16		 DMC 3031	Mocha Brown - Very Dark	2712
17		 DMC 3042	Antique Violet - Light	615
18		 DMC 3608	Plum - Very Light	853
19		 DMC 3609	Plum - Ultra Light	396
20		 DMC 3688	Mauve - Medium	930
21		 DMC 3713	Salmon - Very Light	778
22		 DMC 3727	Antique Mauve - Light	291
23		 DMC 3743	Antique Violet - Very Light	765
24		 DMC 3825	Pumpkin - Pale	136
25		 DMC 3861	Cocoa - Light	980
26		 DMC 3862	Mocha Beige - Dark	1407
27		 DMC 3863	Mocha Beige - Medium	1224
28		 DMC B5200	Snow White	134