

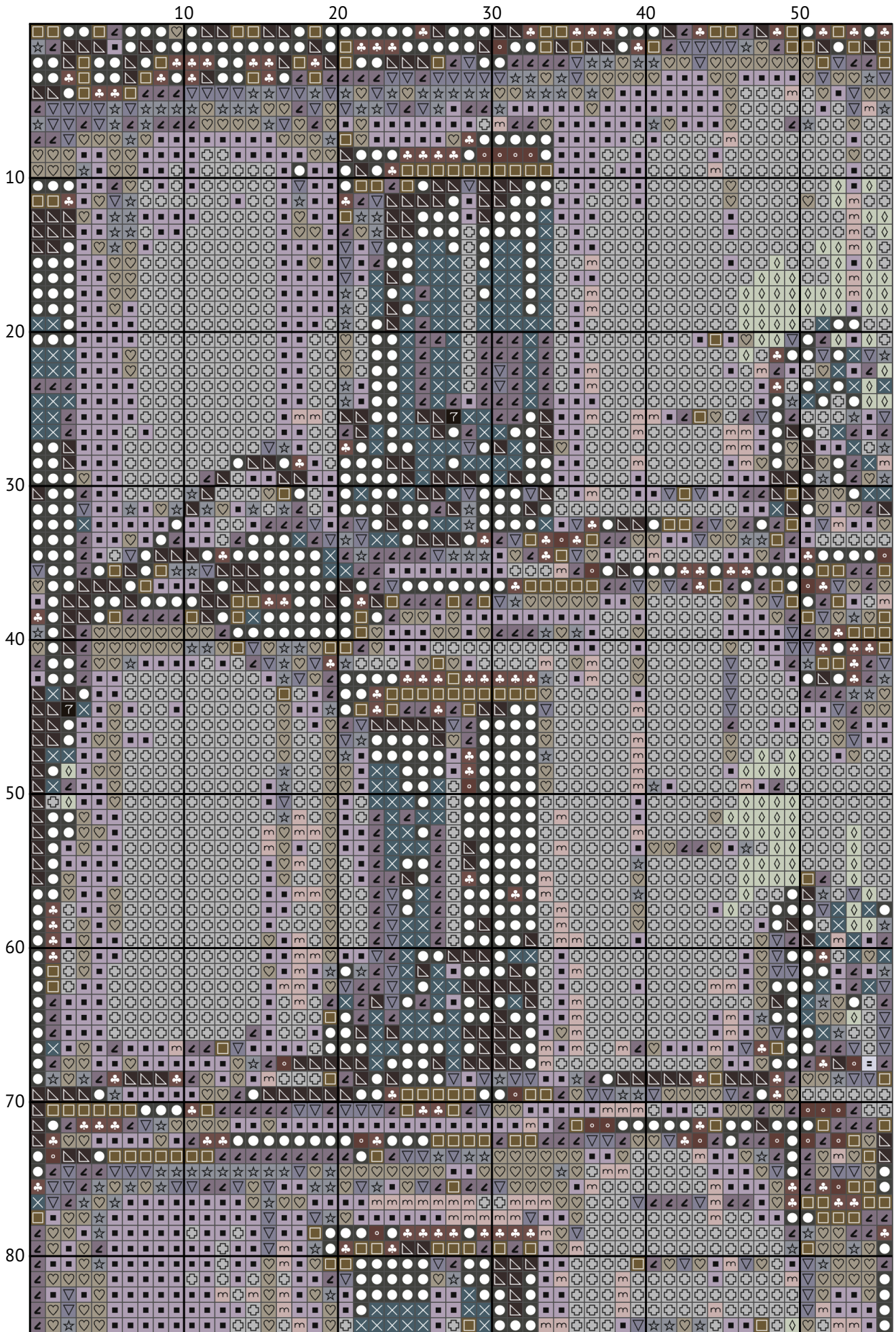
Улицы Парижа

Схема вышивки крестиком

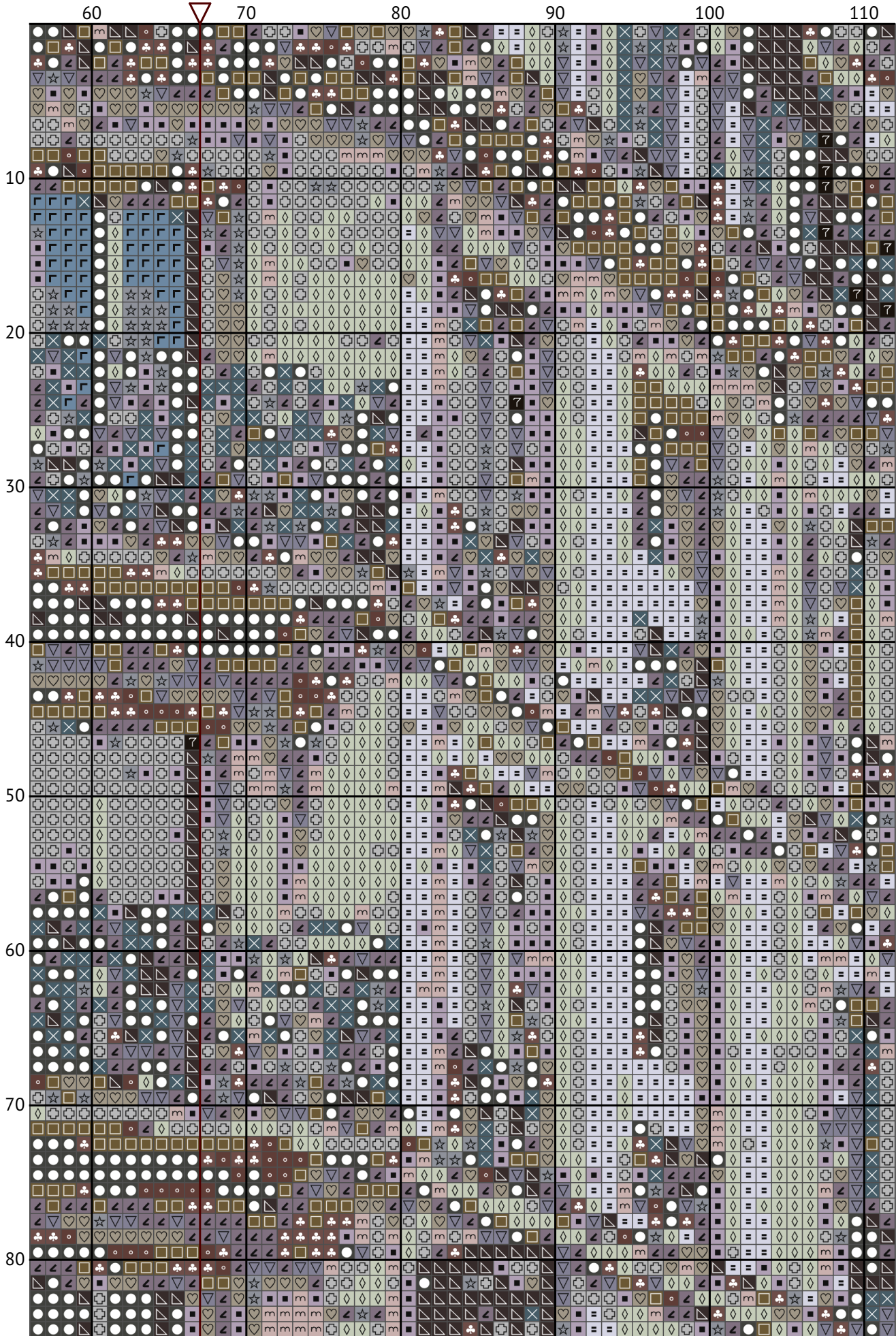


Размер: 134 x 201 крестиков

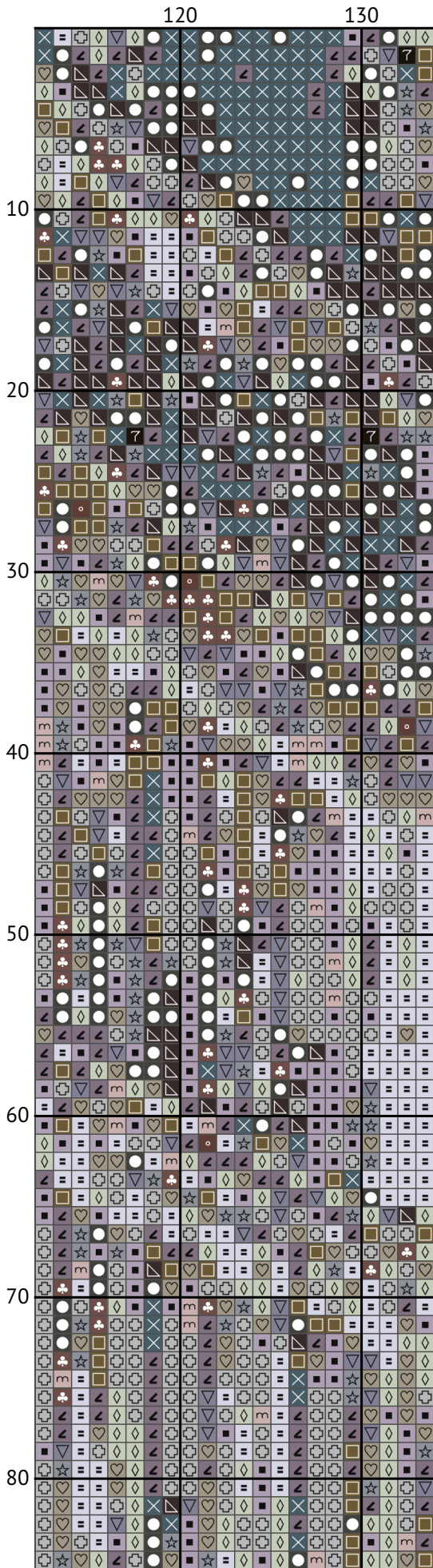
Улицы Парижа



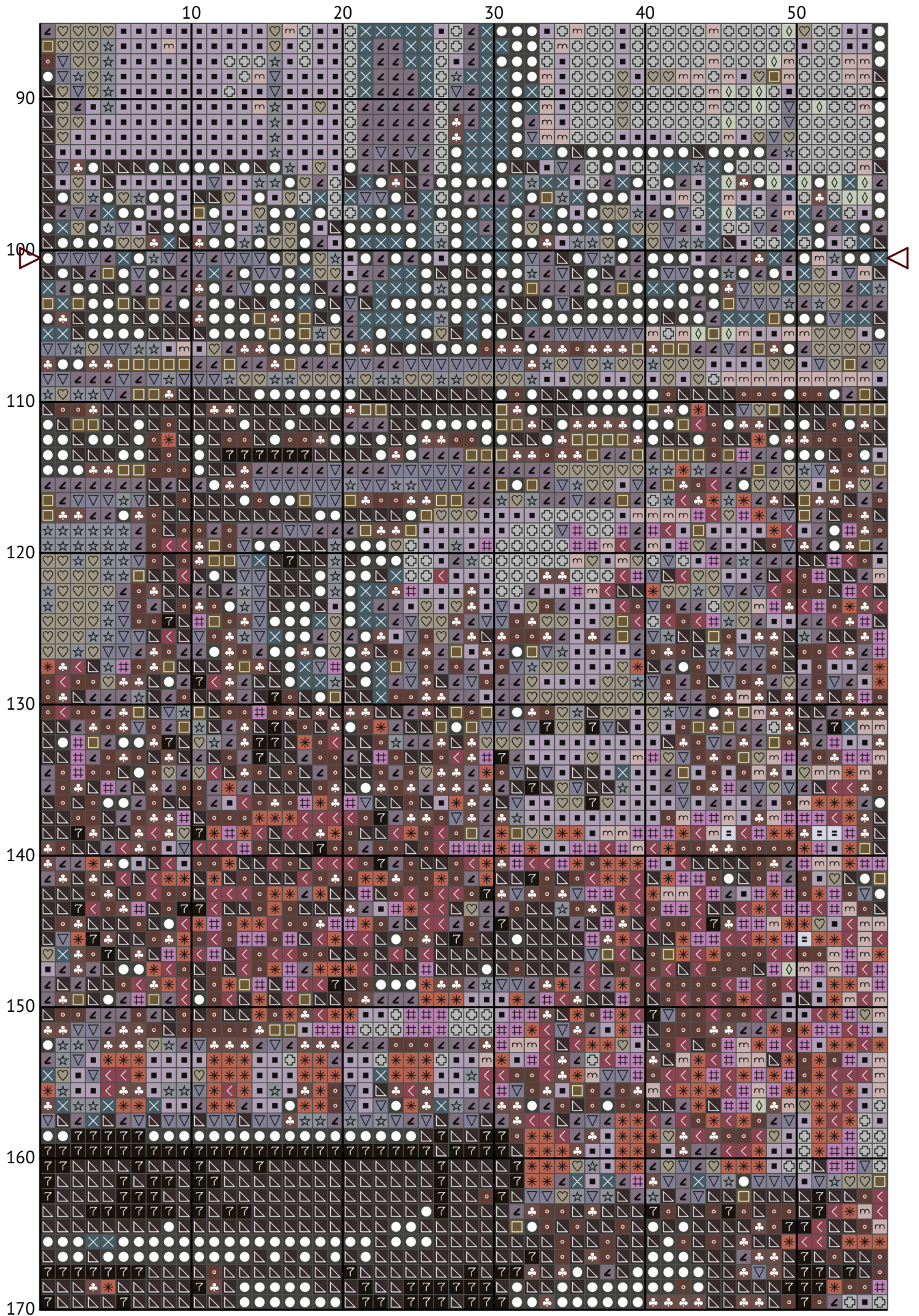
Улицы Парижа



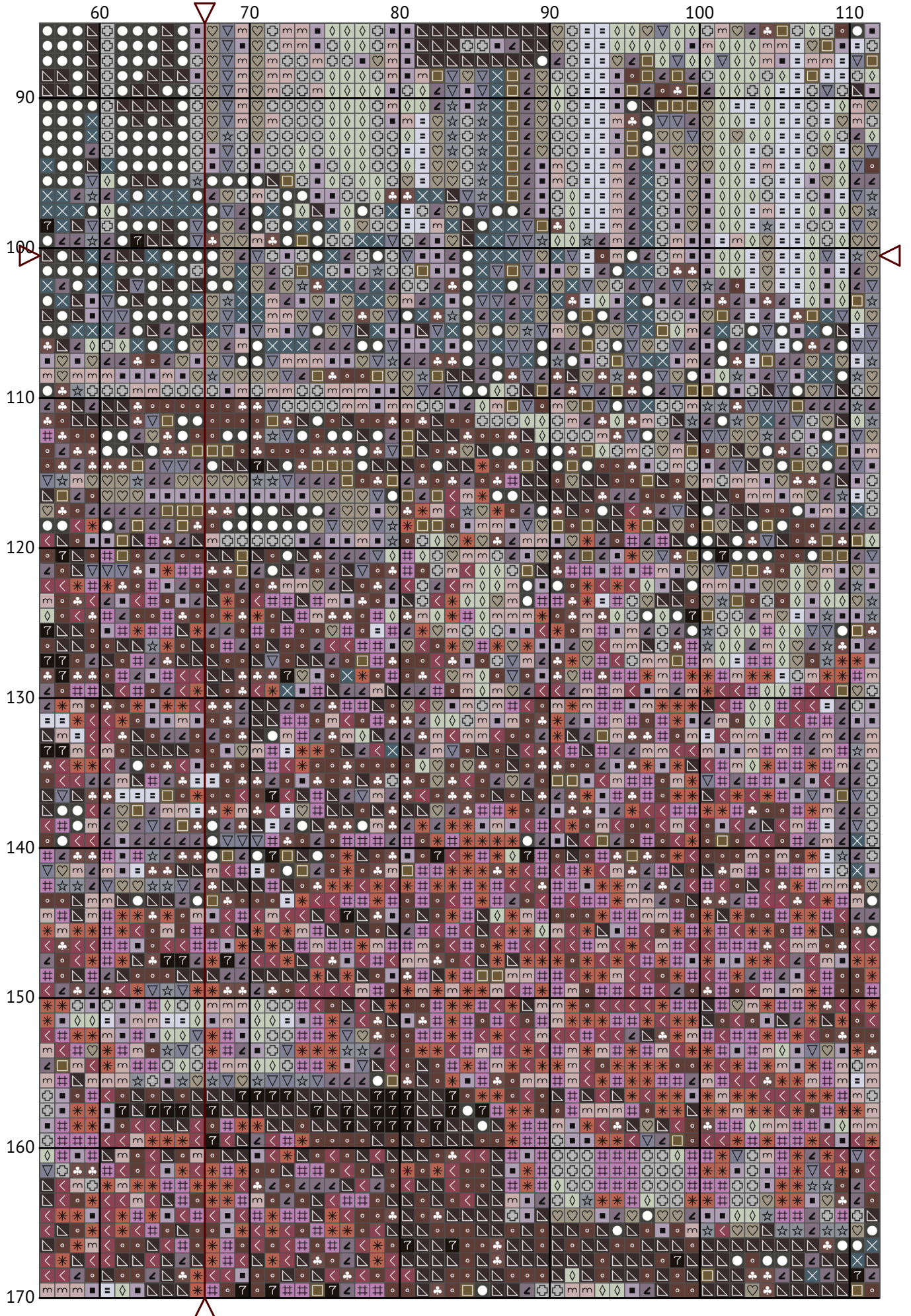
Улицы Парижа



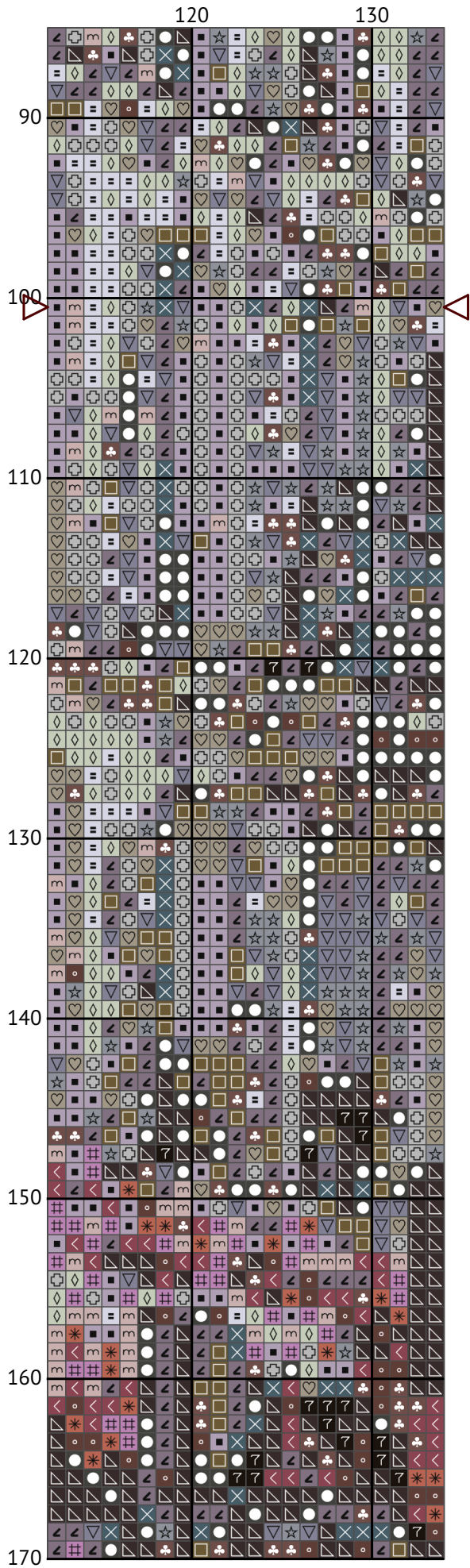
Улицы Парижа



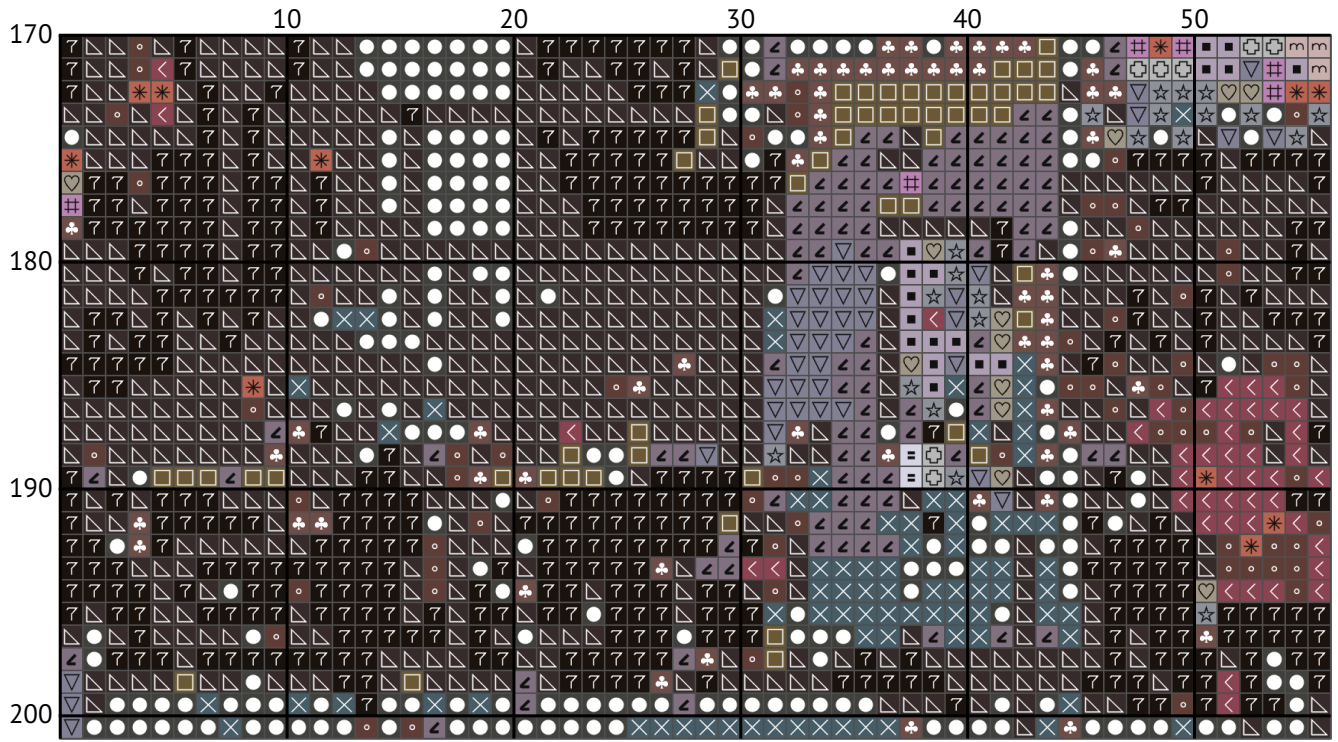
Улицы Парижа



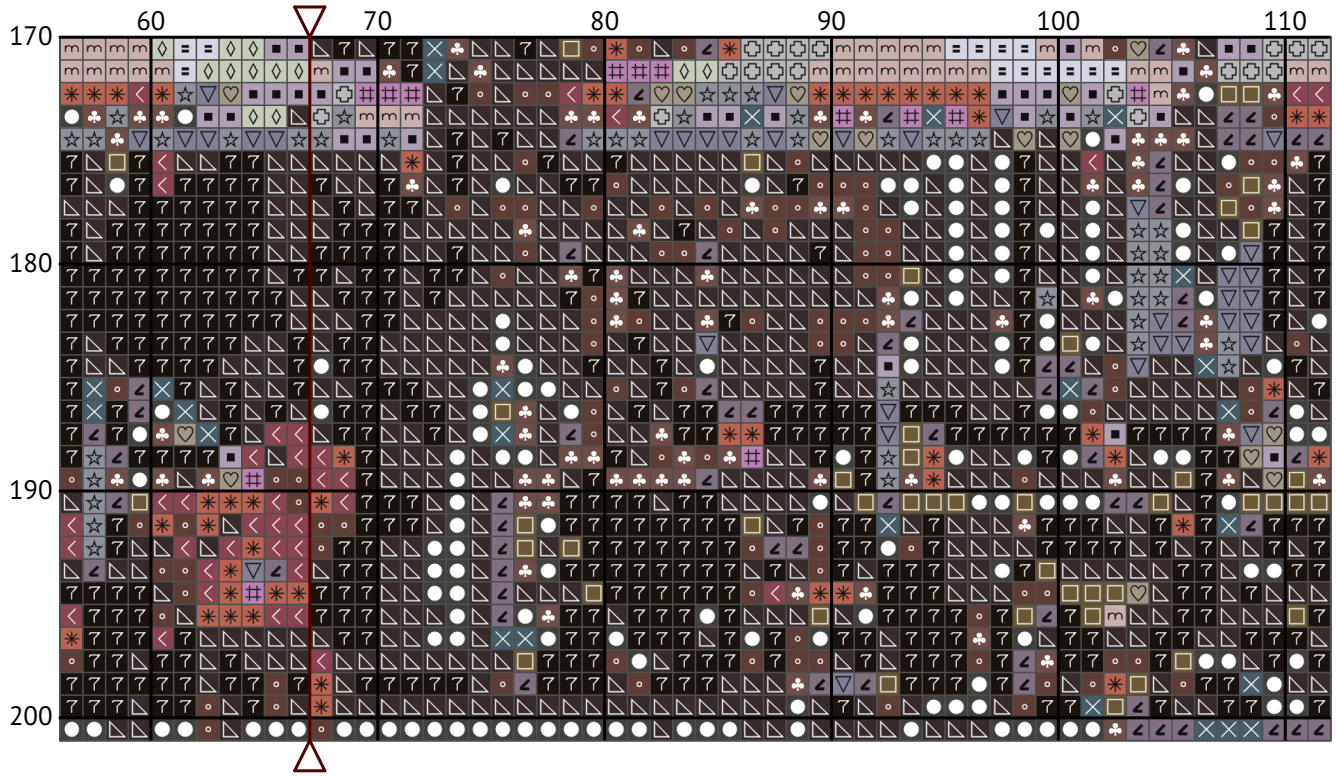
Улицы Парижа



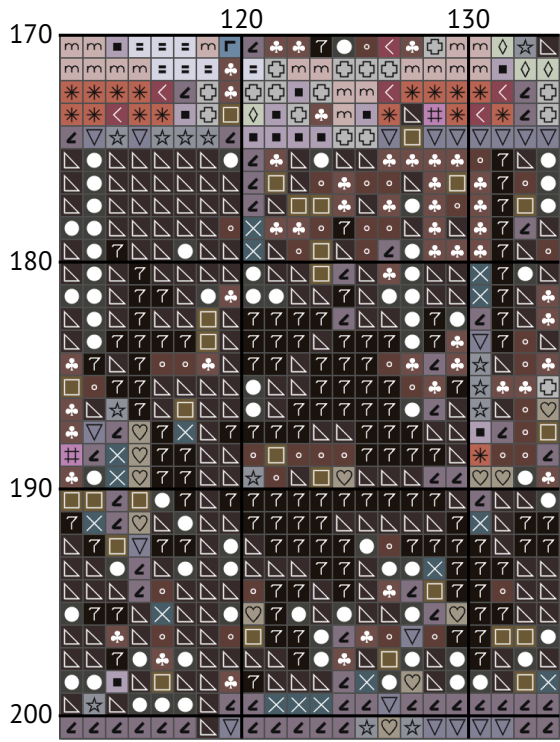
Улицы Парижа






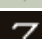







Улицы Парижа



Улицы Парижа



Улицы Парижа
Список нитей мулине DMC

N	Symbol	Number	Name	Stitches
1		 DMC 01	Tin - White	2969
2		 DMC 03	Tin - Medium	812
3		 DMC 09	Cocoa - Very Dark	3376
4		 DMC 27	Violet - White	817
5		 DMC 318	Steel Gray - Light	1120
6		 DMC 452	Shell Gray - Medium	851
7		 DMC 535	Ash Gray - Very Light	2639
8		 DMC 611	Drab Brown	1119
9		 DMC 648	Beaver Gray - Light	1463
10		 DMC 779	Cocoa - Dark	1110
11		 DMC 932	Antique Blue - Light	53
12		 DMC 3042	Antique Violet - Light	2090
13		 DMC 3072	Beaver Gray - Very Light	1187
14		 DMC 3371	Black Brown	1172
15		 DMC 3726	Antique Mauve - Dark	614
16		 DMC 3743	Antique Violet - Very Light	2193
17		 DMC 3768	Gray Green - Dark	990
18		 DMC 3836	Grape - Light	567
19		 DMC 3859	Rosewood - Light	645
20		 DMC 3860	Cocoa	1147